

QUIZ

Fast Rapid & Extra Blood Flow

Journal of Obstetric and Gynaecological Practices POGS (2023): 10.5005/jogyp-11012-0009

A 27-year-old aborted lady has presented with recurrent episodes of heavy bleeding. She gives the history of mid-trimester abortion at 18 weeks of gestation 60 days back. She has been given a transfusion of blood products twice.

Figure 1 represents an ultrasound with color Doppler.

She underwent an emergency procedure at the Tertiary Care Center, which was successful.

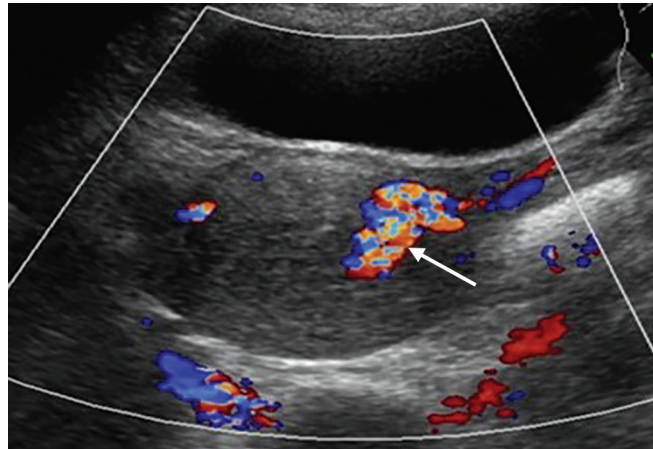


Figure 1

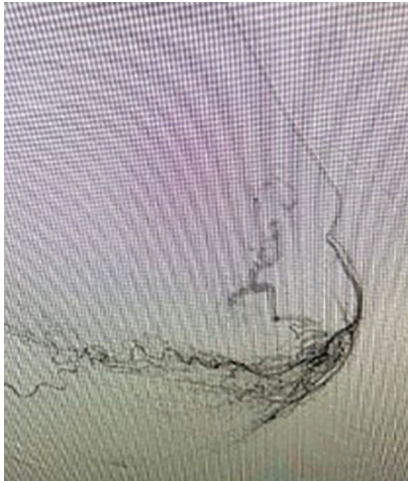


Figure 2



Figure 3

Quiz

1. What does Figure 1 show? Please write the diagnosis.
2. Write the name of the procedures shown in Figures 2 and 3.
3. Write the differences seen in Figures 2 and 3.

Patient consent for publication: Written consent was obtained from the patient for the publication of the case details and the images.